

# Rapid Anti-HIV (1&2) Test QUICK OPERATION GUIDE

**CAUTION:** Study the instructions for use before using Quick operation guide. This is not complete Instructions for use. After looking at the diagram below and familiarizing yourself with how to use it, follow the guide below.

## STEP 1 PREPARATION

**1.** Wash your hands and make sure they are dry before starting the test.



**2.** Open the package box. Look for the following components provided:



**CAUTION:** Carefully read the instructions for use prior to use Rapid Anti-HIV (1&2) Test

**3.** Check the expiry date on the kit. Do not use the kit if expiry date has passed.



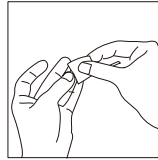
Use at room temperature (2-30°C)

**4.** Unseal the foil pouch. Put the card and dropper on a clean, dry and level surface.

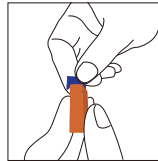


## STEP 2 SAMPLE COLLECTION

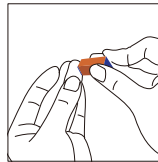
**5.** Clean the finger with alcohol swab and leave it to dry.



**6.** Twist the lancet cap for over 180° and remove it.

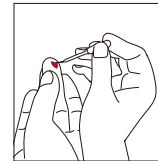


**7.** Place the lancet firmly on side of finger (avoid callus) to trigger it.

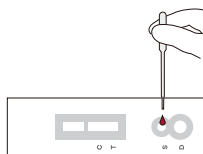


## STEP 3 ADD SAMPLE

**8.** Use dropper to collect sample. Gently squeeze and release bulb to collect blood past tip of dropper.

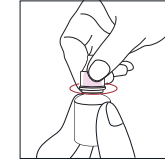


**9.** Add one drop of blood to the "S" well with the plastic dropper.

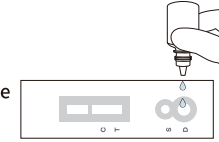


## STEP 4 ADD SAMPLE DILUENT

**10.** Unscrew the cap of the dilution bottle.

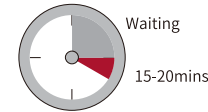


**11.** Add two drops of sample diluent to the "D" well.



## STEP 5 RESULT INTERPRET

**12.** Wait for 15 minutes to interpret the results. Do not interpret the results after 20 minutes.



### POSITIVE

Both purplish test band and purplish control band appear on the membrane. The lower the antibody concentration, the weaker the test band.



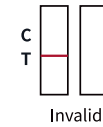
### NEGATIVE

Only the purplish control band appears on the membrane. The absence of a test band indicates a negative result.



### INVALID

There should always be a purplish control band in the control region regardless of test result. If control band is not seen, the test is considered invalid. Repeat the test using a new test card.



**CAUTION:** Please refer to the INSTRUCTIONS FOR USE for more details.